

260 CALIFORNIA



Historic Boutique Building

ROMAN ADLER

Executive Managing Director
T 415.274.4434
roman.adler@nrmk.com
RE LIC #01520766

MARK GEISREITER

Executive Managing Director
T 415.290.5797
mark.geisreiter@nrmk.com
RE LIC #00889721

NEWMARK



BUILDING *Highlights*



Historic Building



Full Floor Opportunities



Three Sides of Natural Light



Operable Windows



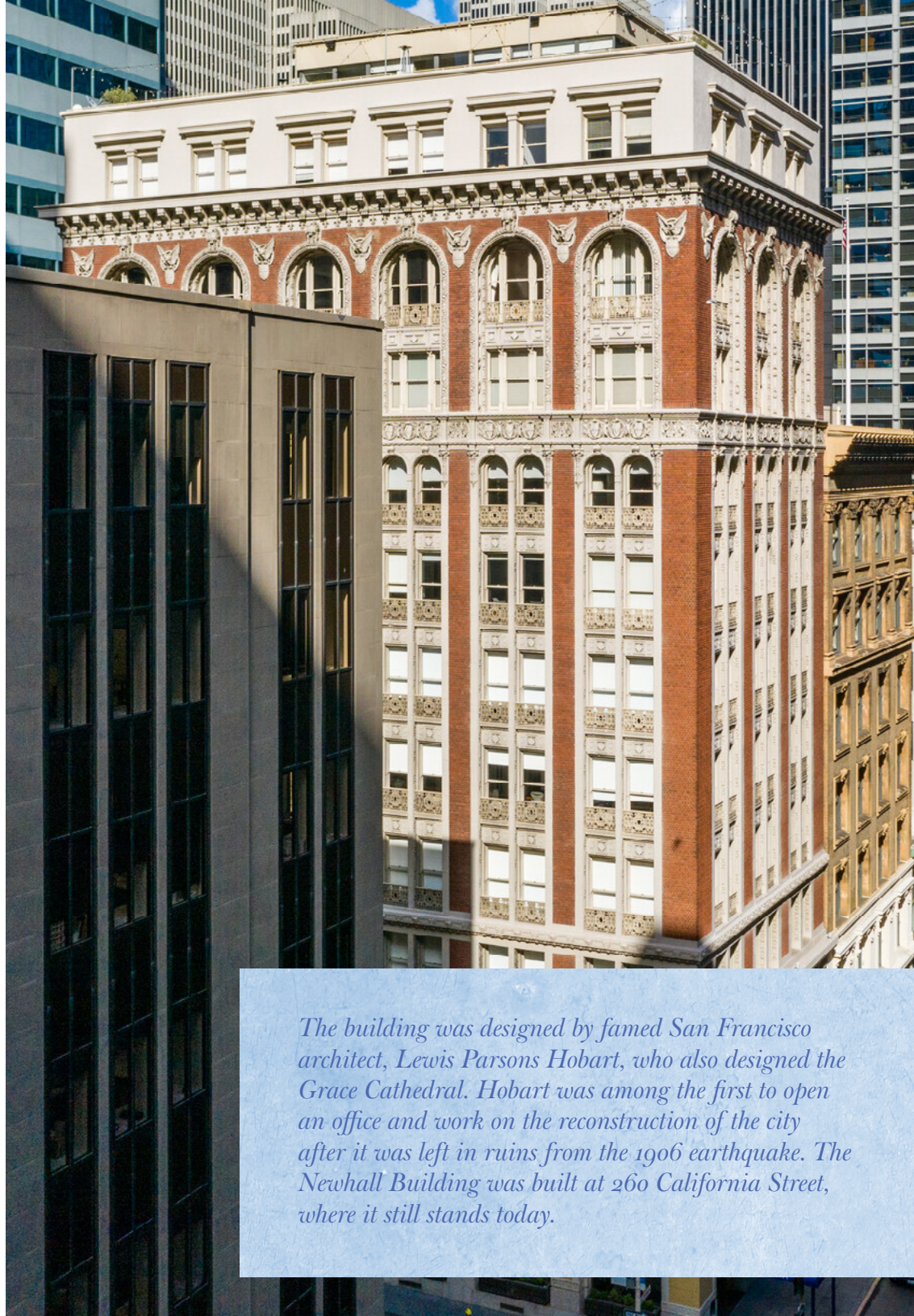
Prominent Financial
District Corner Location



Use of Amazing Newhall
Nest Entertaining Space
www.newhallnest.com



Well-capitalized &
Proactive Ownership



The building was designed by famed San Francisco architect, Lewis Parsons Hobart, who also designed the Grace Cathedral. Hobart was among the first to open an office and work on the reconstruction of the city after it was left in ruins from the 1906 earthquake. The Newhall Building was built at 260 California Street, where it still stands today.

Available SPACES



Floor	Size	Timing
2nd Floor	5,084 RSF	Available February 2024
5th Floor	4,773 RSF	Available Now
6th Floor	4,775 RSF	Available February 2024



2nd THE FLOOR



- Two conference rooms
- Three private offices
- Open space
- Kitchen area
- Very high ceilings



CALIFORNIA STREET

BATTERY STREET

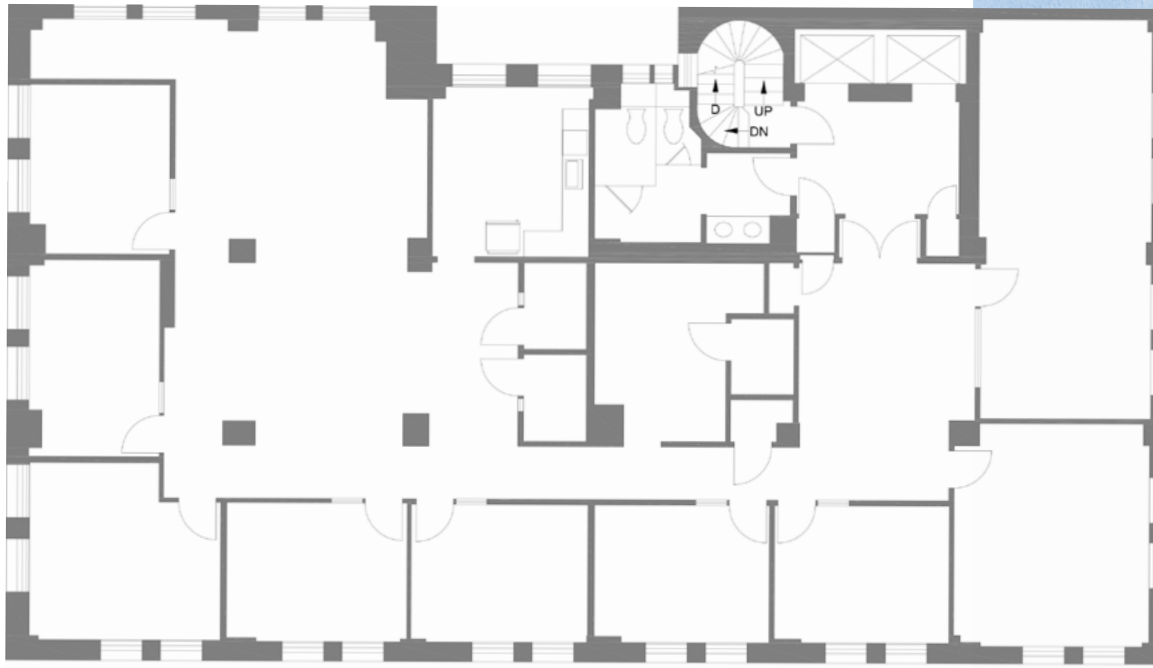


VIRTUAL TOUR

5th THE FLOOR



- 8 Offices
- Conference room
- Kitchen
- Production room
- Open area



CALIFORNIA STREET

BATTERY STREET



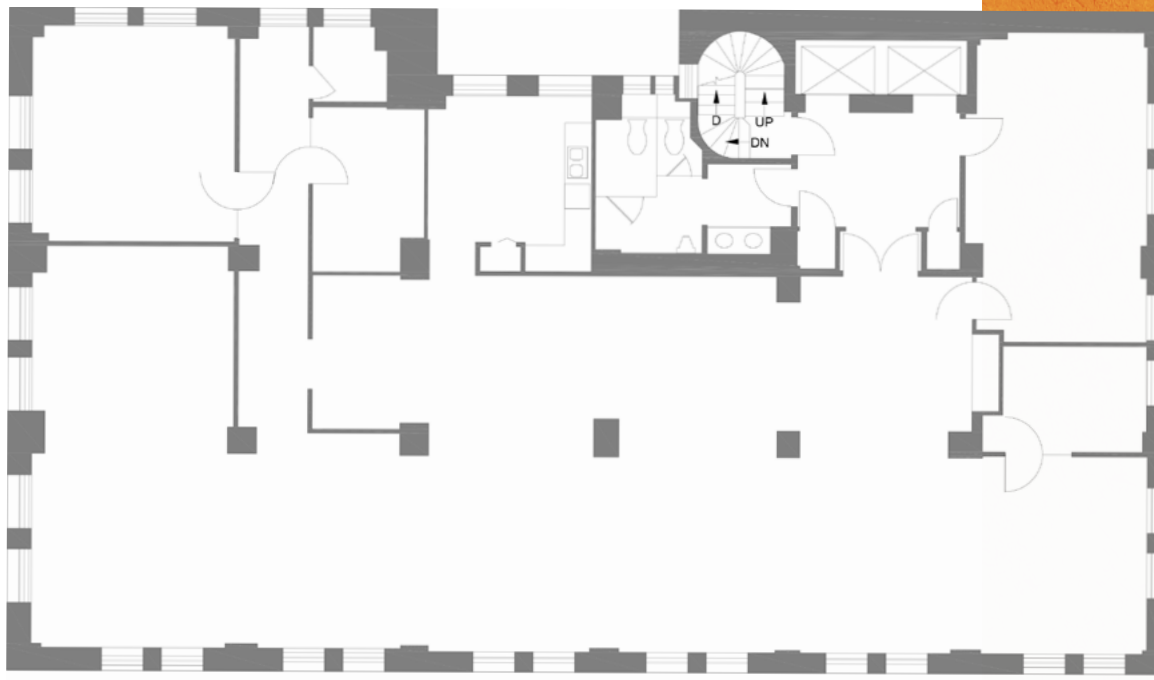
5th
THE FLOOR



THE 6th FLOOR



- Two conference rooms
- One private office
- Open Space
- Kitchen Area
- Three sides of windows, great light



CALIFORNIA STREET

BATTERY STREET



www.newhallnest.com



Amenities MAP

RESTAURANTS

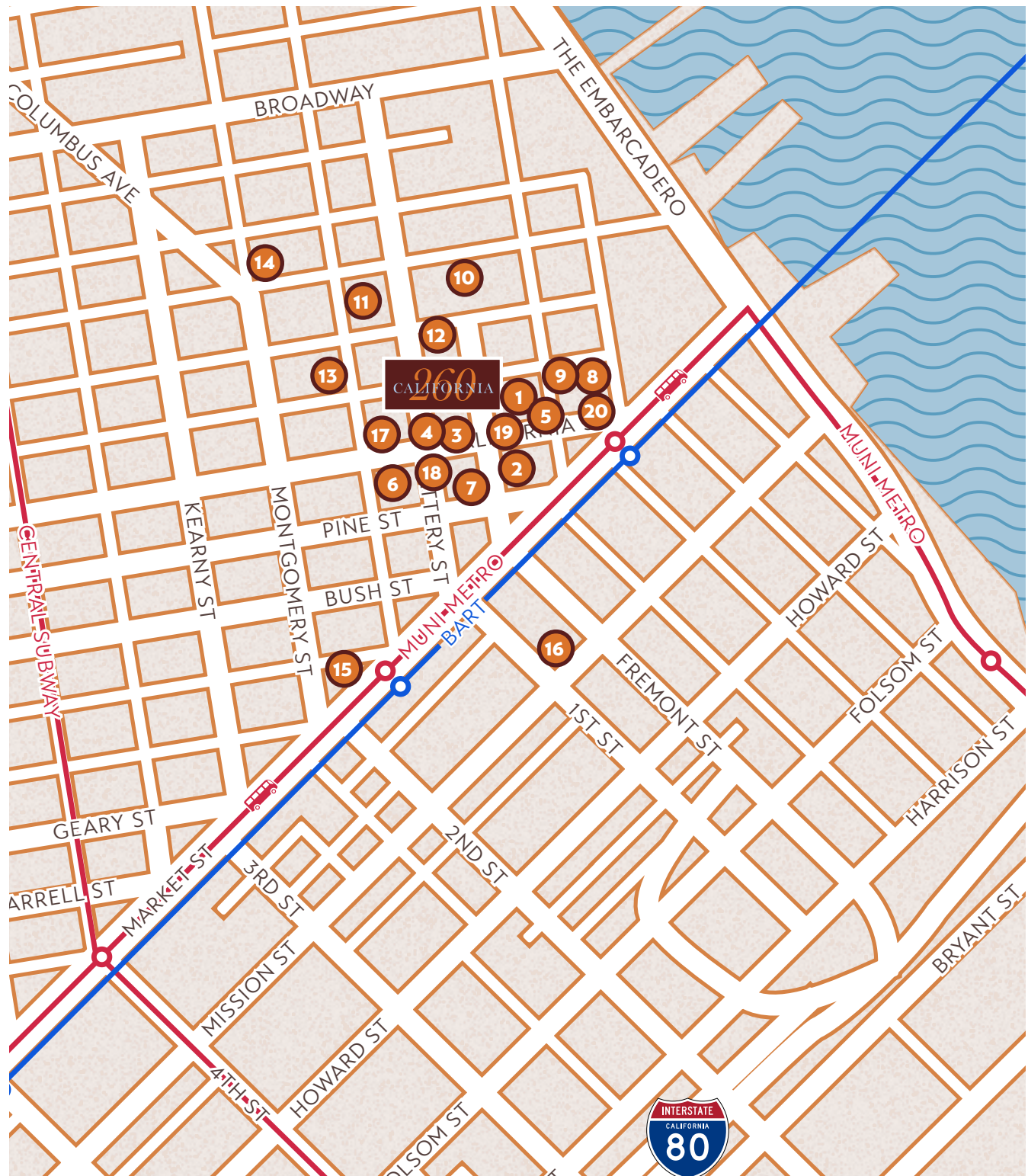
1. Schroeders
2. PABU Izakaya
3. Estiatorio Ornos
4. Perbacco
5. MIXT
6. MOMO Noodle
7. Lous Café
8. Oasis Grill
9. Focaccia Market Bakery
10. Gambinos
11. Fish and Farm

BARS

12. Royal Exchange
13. Irish Times
14. High Horse
15. Sutter Station
16. 83 Proof

CAFÉS

17. Il Canto Café
18. Starbucks
19. Bluestone Lane
20. Café Terminus



260 CALIFORNIA



For more information:

ROMAN ADLER

Executive Managing Director
T 415.274.4434
roman.adler@nmrk.com
RE LIC #01520766

MARK GEISREITER

Executive Managing Director
T 415.290.5797
mark.geisreiter@nmrk.com
RE LIC #00889721

NEWMARK



One Sansome St, Floor 41, San Francisco, CA 94104

The distributor of this communication is performing acts for which a real estate license is required. The information contained herein has been obtained from sources deemed reliable but has not been verified and no guarantee, warranty or representation, either express or implied, is made with respect to such information. Terms of sale or lease and availability are subject to change or withdrawal without notice.